



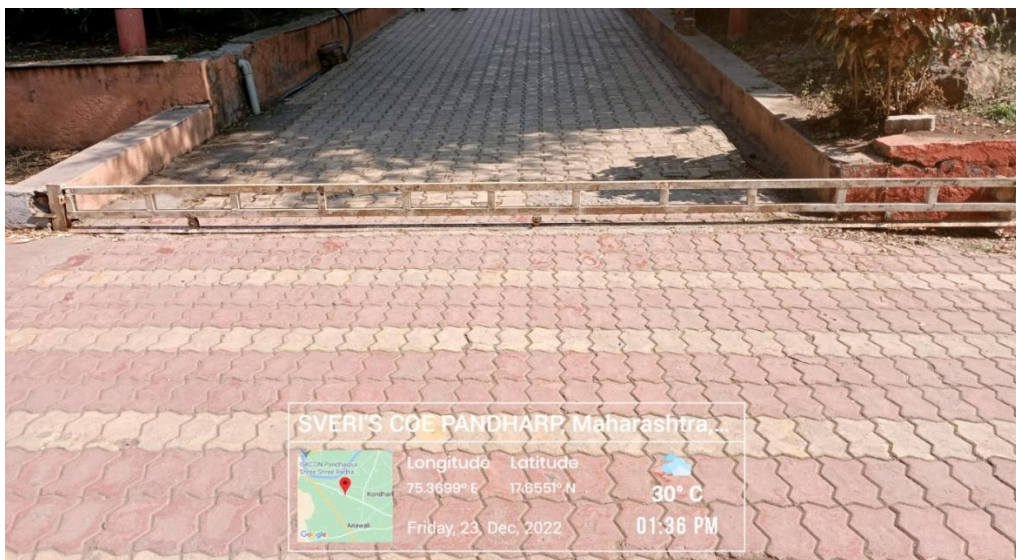
# Shri Vitthal Education & Research Institute's COLLEGE OF ENGINEERING, PANDHARPUR

P. B. No. 54, Gopalpur-Ranjani Road, Gopalpur, Tal.: Pandharpur, Pin: 413304, Dist-Solapur, (MH)  
Contact No.: 9545553888, 9545553737, E-mail: coe@sveri.ac.in, Website: www.sveri.ac.in

Approved by A.I.C.T.E. New Delhi, Affiliated to Punyashlok Ahilyadevi Holkar Solapur University, Solapur  
NBA Accredited all Eligible UG Programs, Accredited by NAAC A+ with 3.46 CGPA out of 4.00,  
An ISO 9001: 2015 Certified Institute, The Institution of Engineers, Kolkata & TCS Pune.

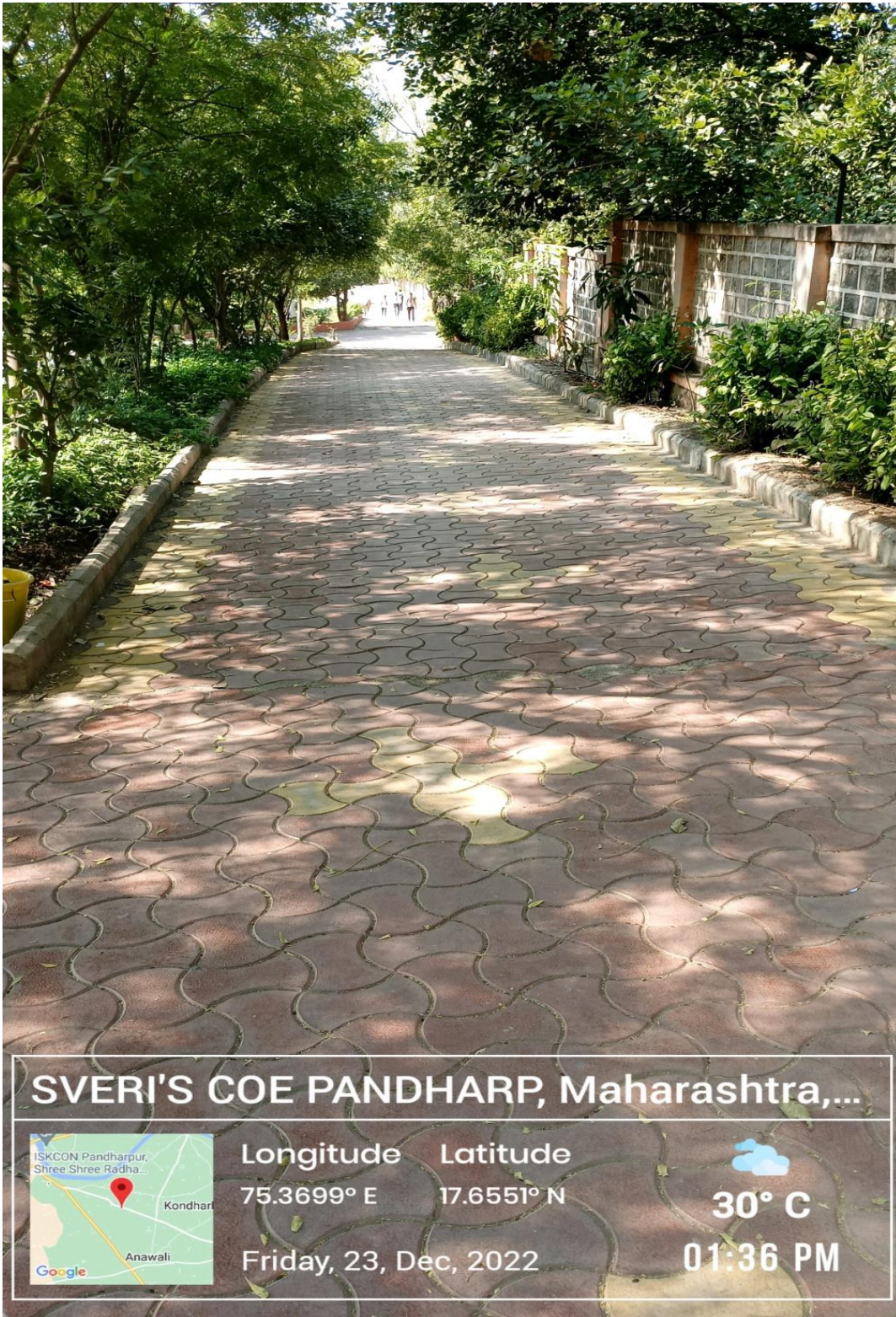


## 7.1.5 Green Campus Initiatives



Restricted Entry for of Automobiles





Pedestrian- Friendly pathways



Shri Vithal Education & Research Institute's  
College of Engineering, Pandharpur



### Five Common Plastic Types

- 01 **Polyethylene Terephthalate (PET)**  
Found in soda and water bottles, these can be turned into textiles, carpets, shoes, and more.
- 02 **High Density Polyethylene (HDPE)**  
Found in trash bags and milk jugs, these can be repurposed into plastic crates and fencing.
- 03 **Polyvinyl Chloride (PVC)**  
Used in sewage and plumbing pipes, these can be reused into flooring.
- 04 **Low Density Polyethylene (LDPE)**  
Found in cling wrap and sandwich bags, these can be recycled to make garbage cans.
- 05 **Polypropylene (PP)**  
Used in disposable cups and food utensils, these can be turned into insulation and rulers.



Reduce your plastic to reduce trash.

Shri Vithal Education & Research Institute's  
College of Engineering, Pandharpur


### 5 Steps to Handle Trash

- Step 1: Reduce.**  
Use only what you need and avoid buying unnecessary items to reduce the trash you generate.
- Step 2: Reuse.**  
Think twice before putting an item in the trash. Find another use for it, donate, or sell it.
- Step 3: Recycle.**  
Segregate your trash by type. Contact local recyclers to collect your non-recyclable trash.
- Step 4: Make compost.**  
Gather fruit and vegetable scraps and make a compost pile in your backyard.
- Step 5: Dispose trash in a landfill.**  
Throw trash in a landfill only if you still have trash left after following the other four steps.




**Throw trash away responsibly**

Shri Vithal Education & Research Institute's  
College of Engineering, Pandharpur



### SAY NO TO PLASTIC

To Save Environment  
Replace Plastic with Greener Alternatives  
for a Sustainable Future



**SVERI'S COE PANDHARP, Maharashtra,...**



**Longitude**    **Latitude**  
75.3699° E    17.6551° N

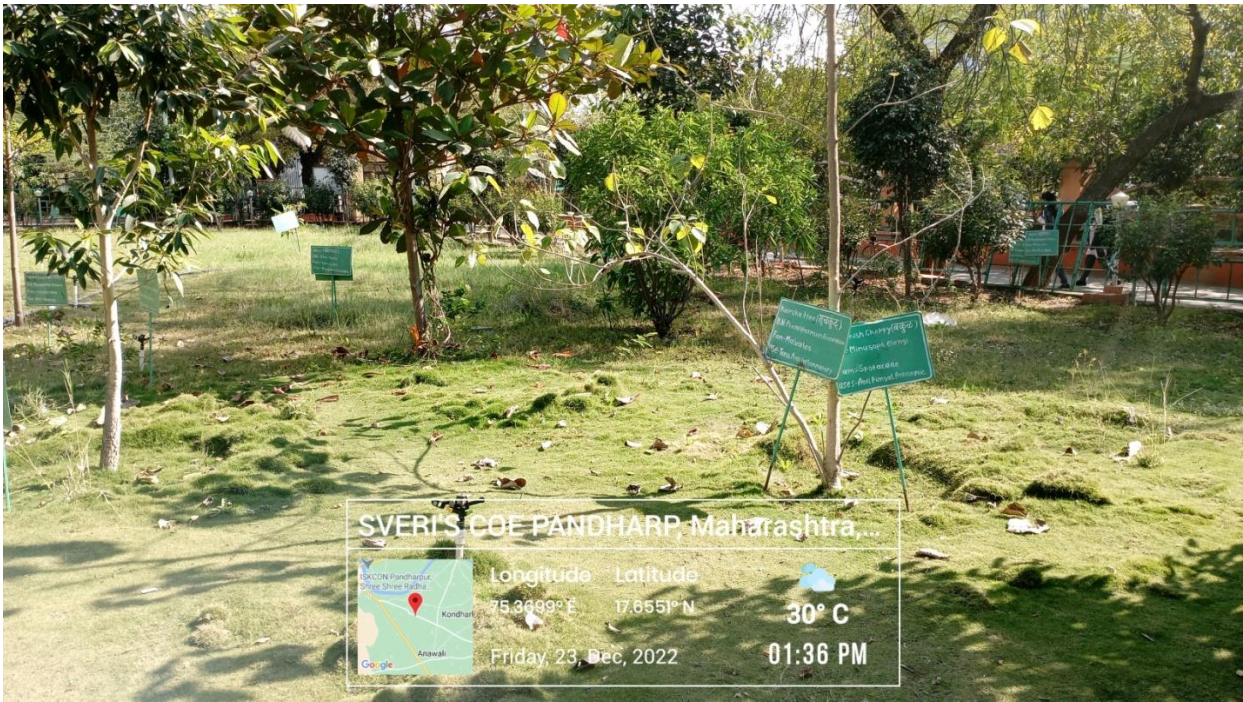
**Friday, 23, Dec, 2022**



**29° C**  
**05:45 PM**

Awareness of Ban on Plastic in Campus





**Medici nary garden**



**Green landscaping**